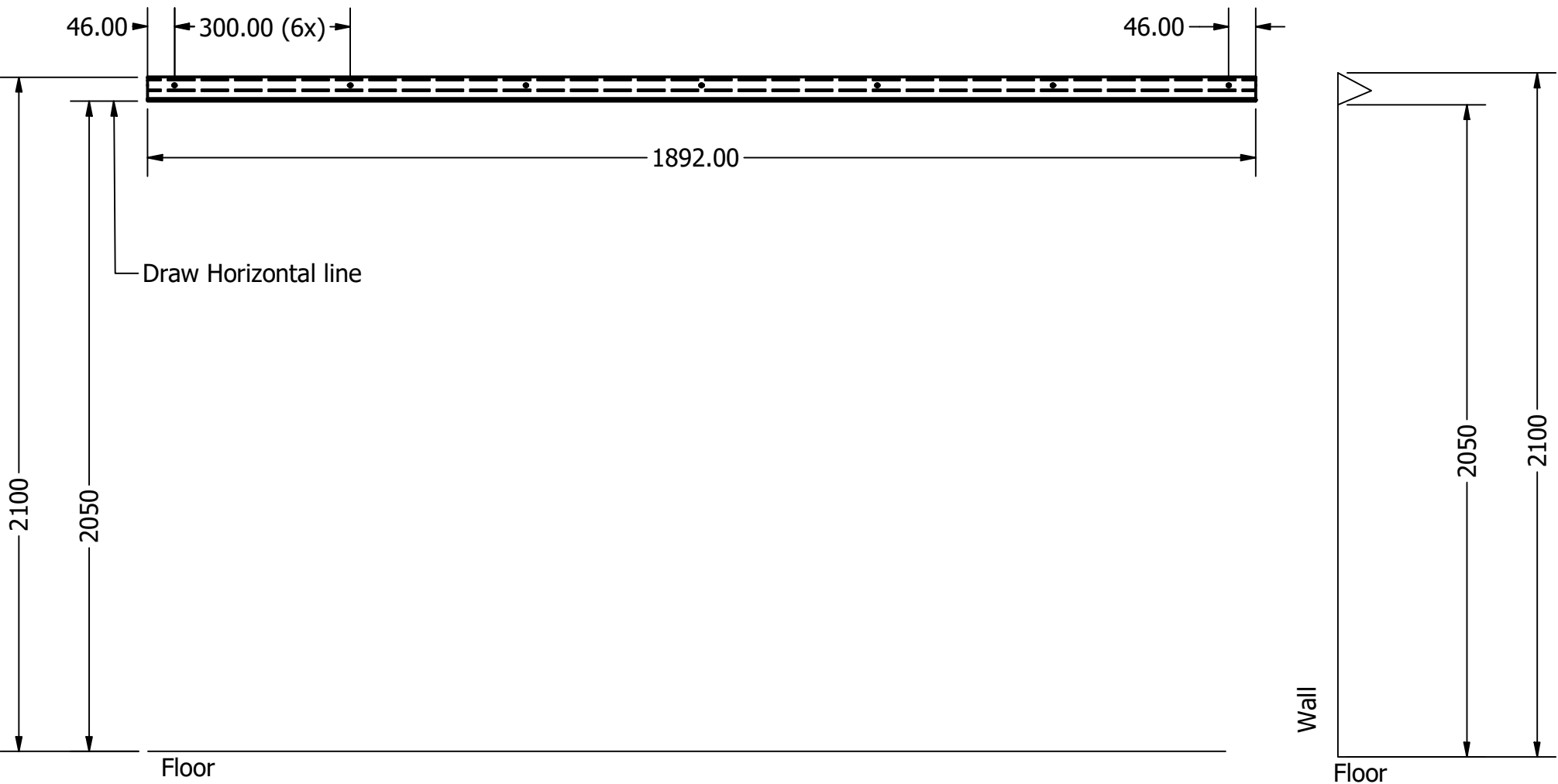


abstracta  
MOOW wall strip

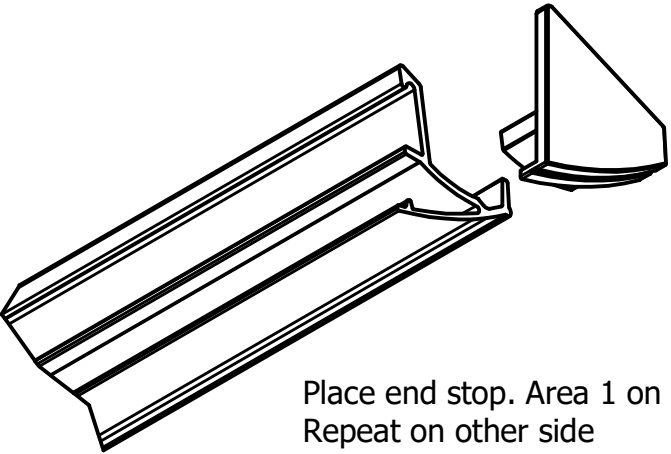
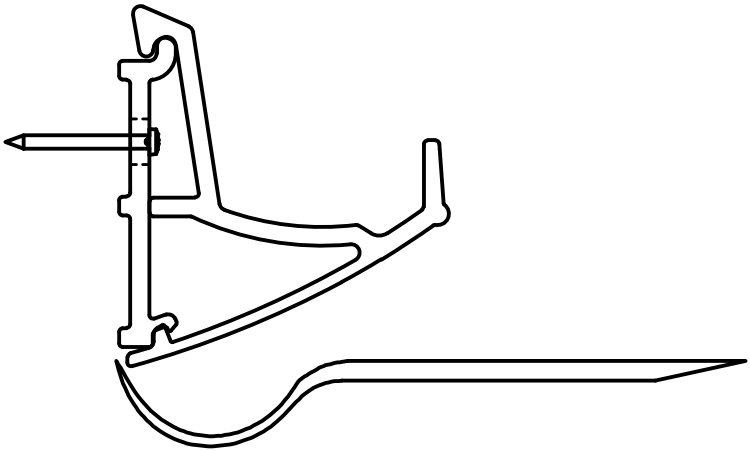
Monteringsanvisning  
Montageanweisung  
Mounting instruction

07/03-2023

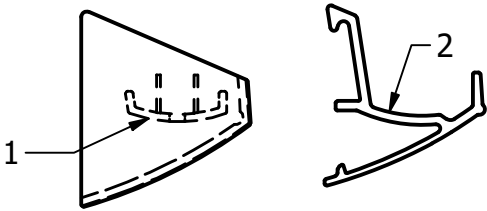


How to dismantle

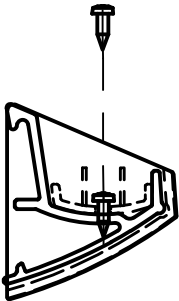
Take small crowbar, put it under profile and bend down until E and D diskonects. Lift profile. Unscrew the screws



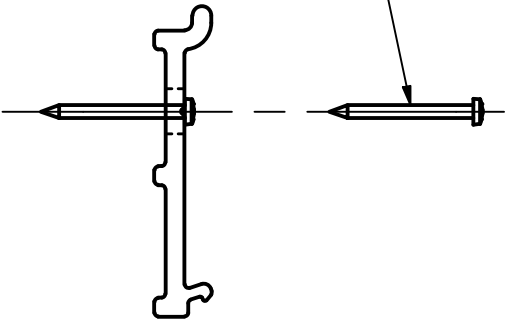
Place end stop. Area 1 on 2.  
Repeat on other side



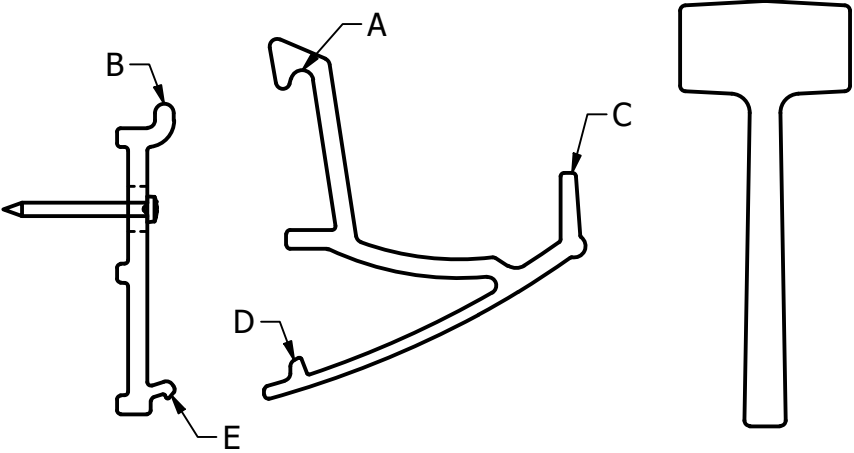
Screw in predrilled hole,  
repeat on other side.  
Screws included



Use screws adapted for the fastening surface.



Hook A on B.  
Use a rubberhammer and  
hit gently on C until D and  
E clicks together



abstracta

# MOOW wall strip joint

Monteringsanvisning  
Montageanweisung  
Mounting instruction

